

Palmetto Cycling Coalition

South Carolina Bicycle and Pedestrian Crashes

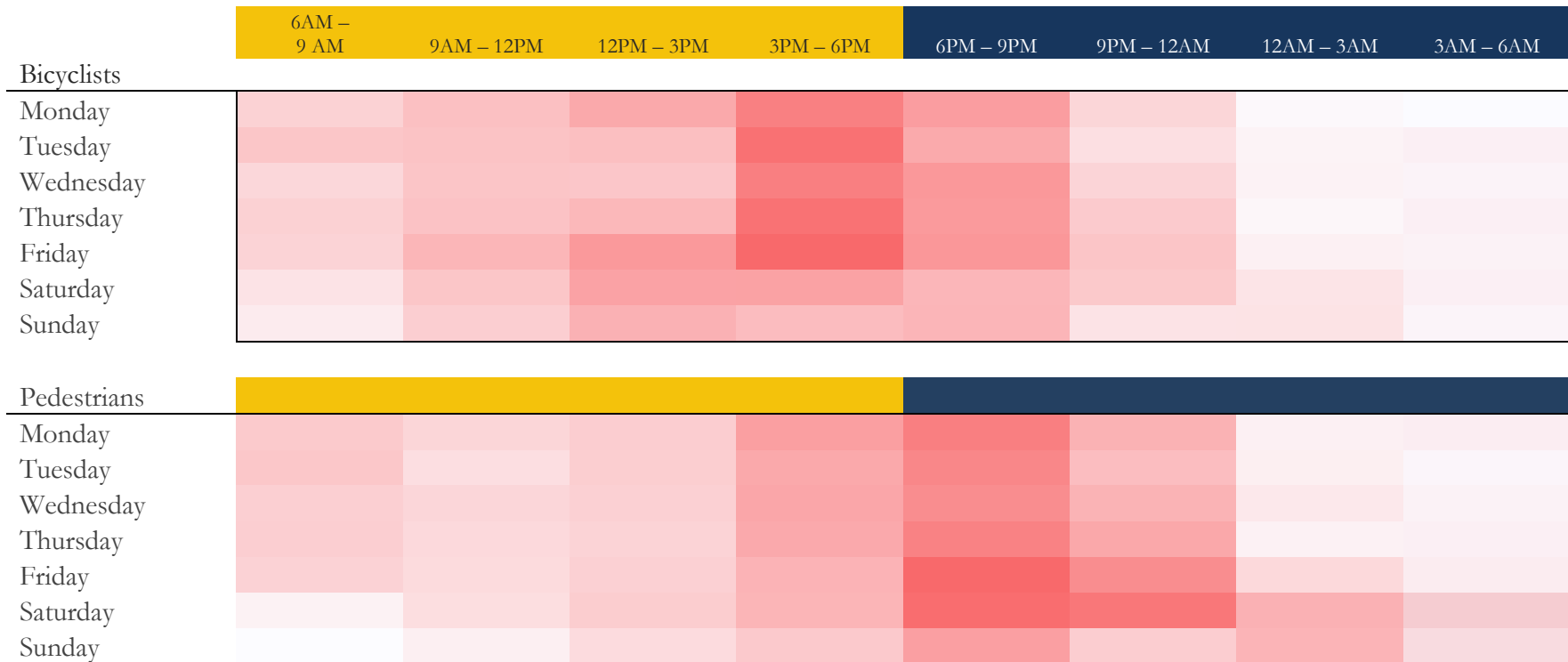
2009 -2015

Report

Prepared by:
Chris Clark,
Policy Fellow



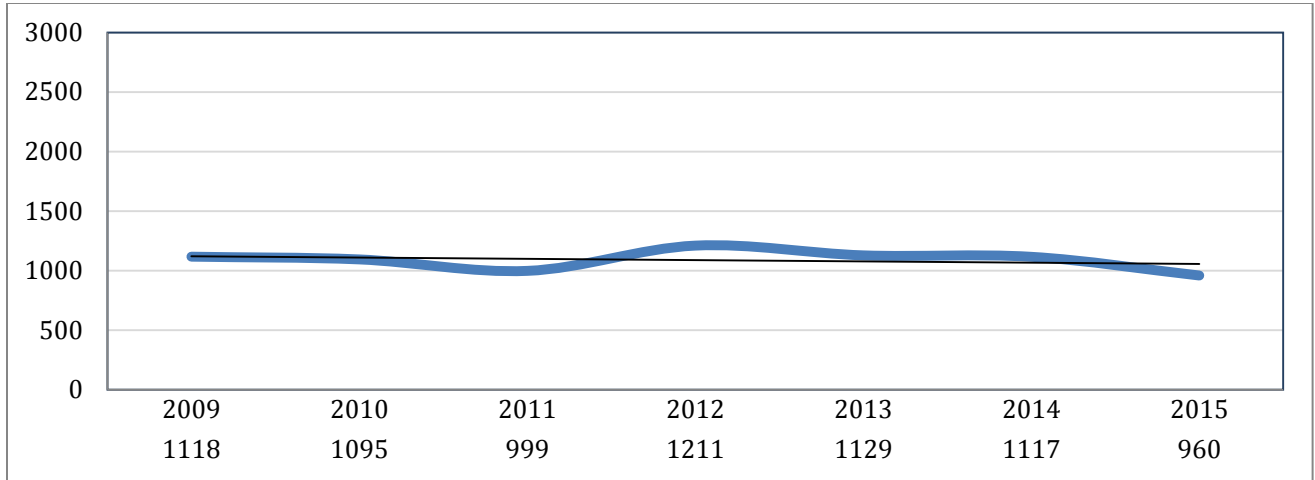
Figure 1. Day and time of all bicycle and pedestrian crashes, South Carolina 2009 - 2015



N = 23,376 Mean = 209 Range = 0-688
 Crashes include all reported incidents. See Appendix for corresponding data tables.



**Figure 2. Total bicycle crashes,
South Carolina, 2009 - 2015**



**Figure 3. Total pedestrian crashes,
South Carolina, 2009 - 2015**

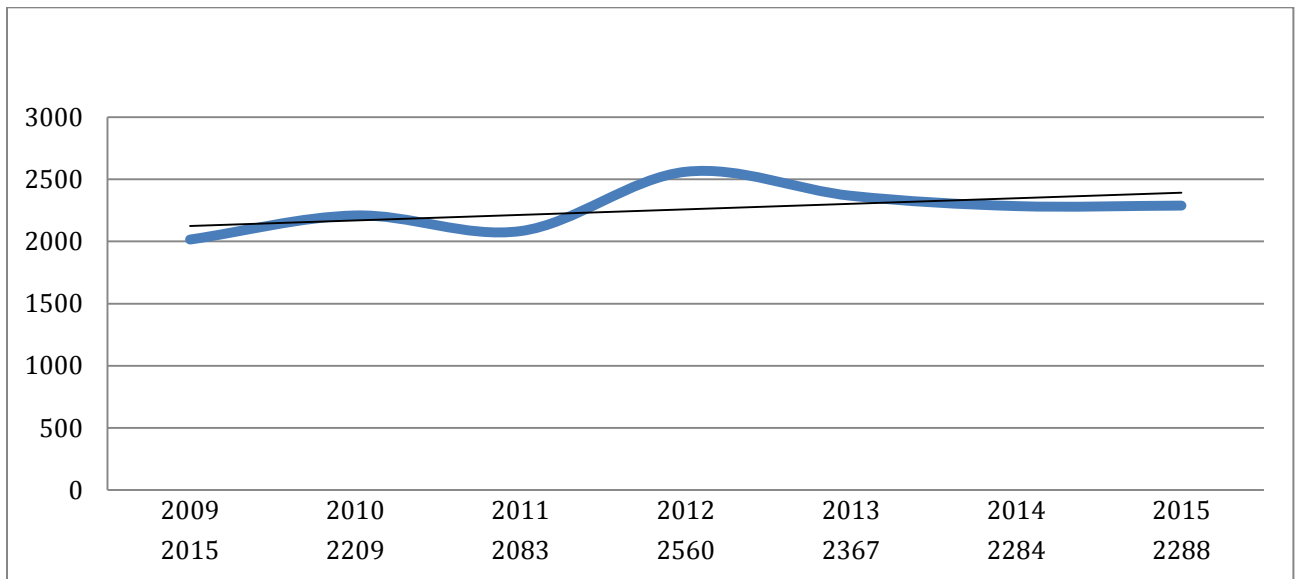


Figure 4. Day of year for all bicycle and pedestrian crashes, South Carolina 2014, 2015

2014

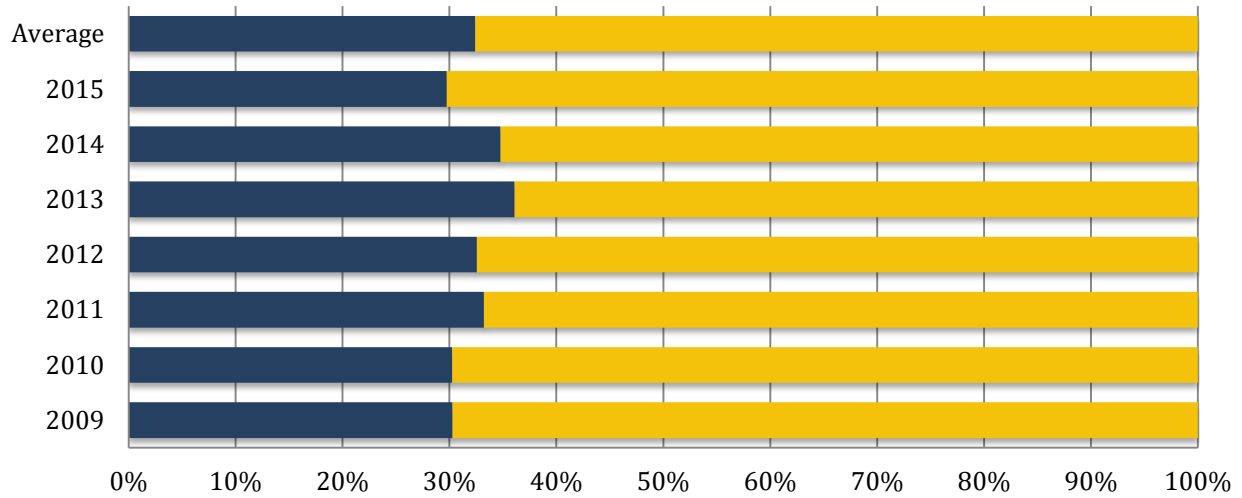


2015

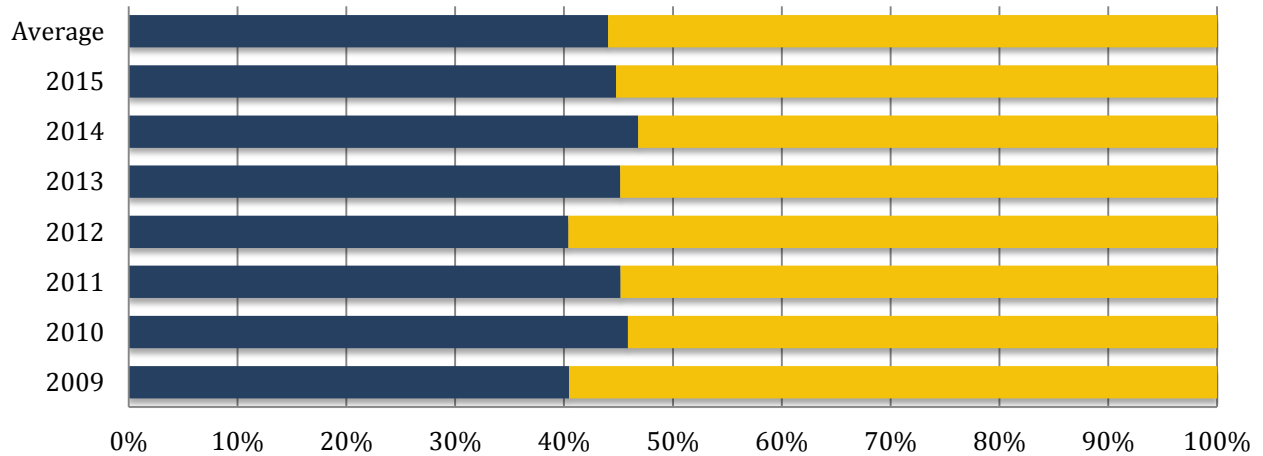


Figures 5. – 8. Victim’s contribution to crash by ethnicity

Injured/Killed African American Bicyclists deemed to contribute to crash, South Carolina 2009 - 2015



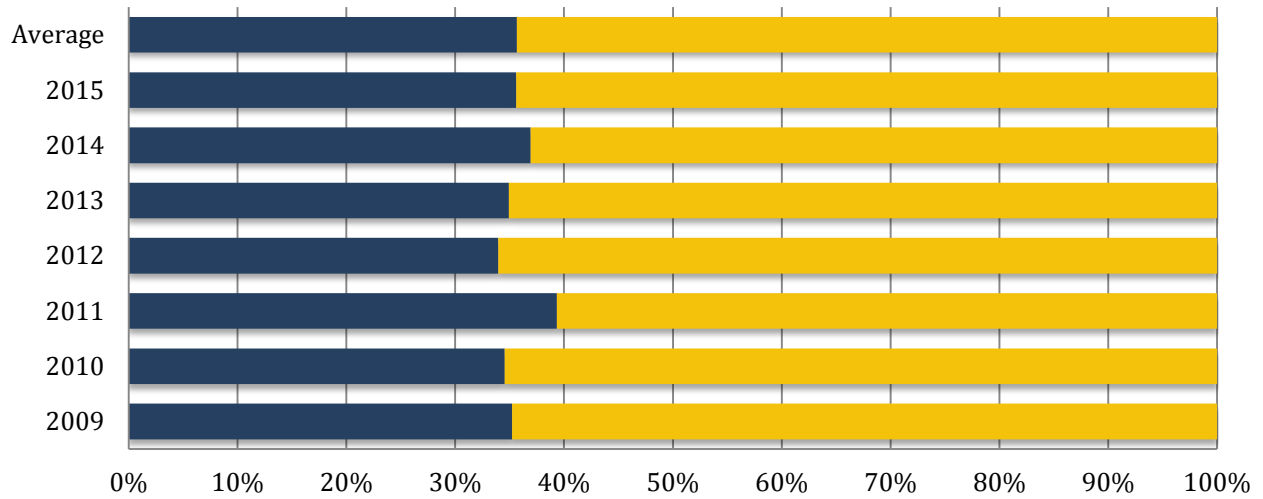
Caucasian Bicyclists



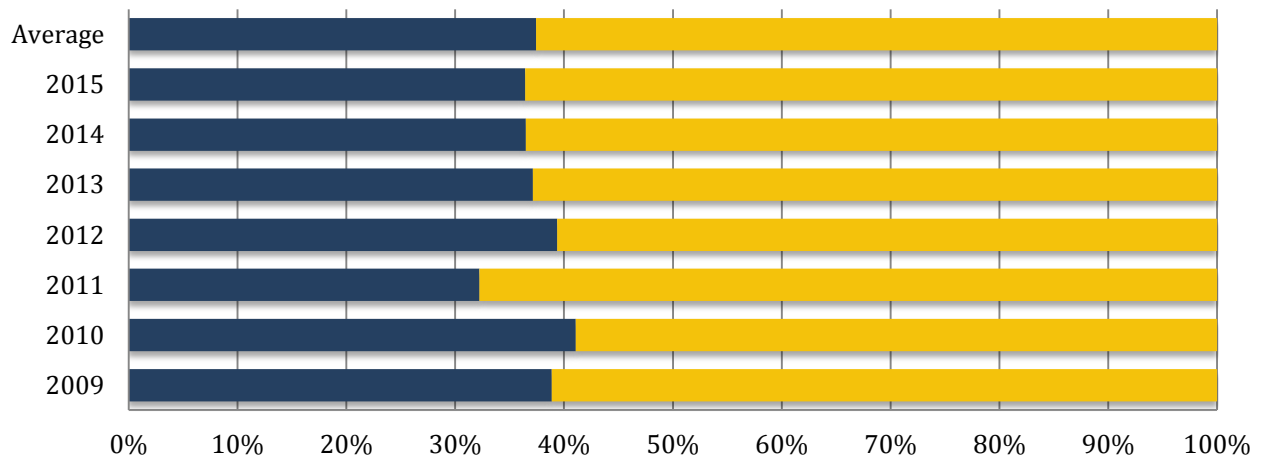
■ Did not contribute ■ Did contribute



Injured/Killed African American Pedestrians deemed to contribute to crash, South Carolina 2009 - 2015



Caucasian Pedestrians



Did not contribute



Did contribute

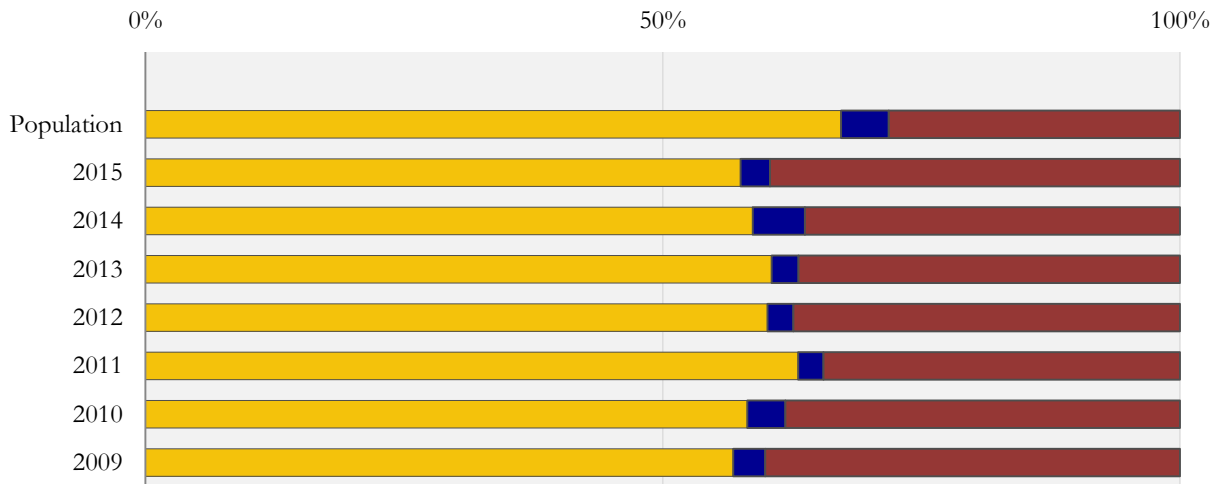


The following pages include racial breakdowns for bicycle and pedestrian crashes with injuries. Percent population based on American Community Survey 5-year estimates and Census (2010). All other racial categories from ACS and Census including more than one race are included in 'Other'. For injury victims, 'Other' races include Hispanic, Alaskan Native/American Indian, Asian/Pacific Islander, and Other as indicated on crash reports. Crash reports indicating 'Unknown' for race were not included. No significant variation in racial distribution within South Carolina or individual Council of Governments occurred from 2009 – 2015. See Appendix for corresponding data tables.

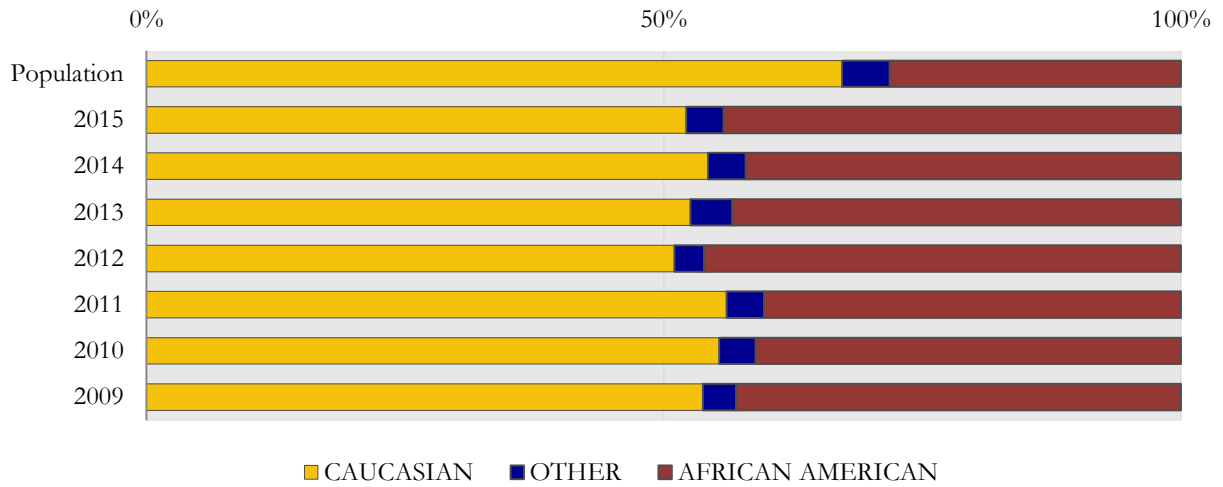
**Figures 9. & 10. Race of crash victims with injury,
South Carolina 2009 – 2015**

Population = 4,511,428 67.3% Caucasian, 4.6% All other, 28.1% African American

S.C. crashed bicyclist ethnicities

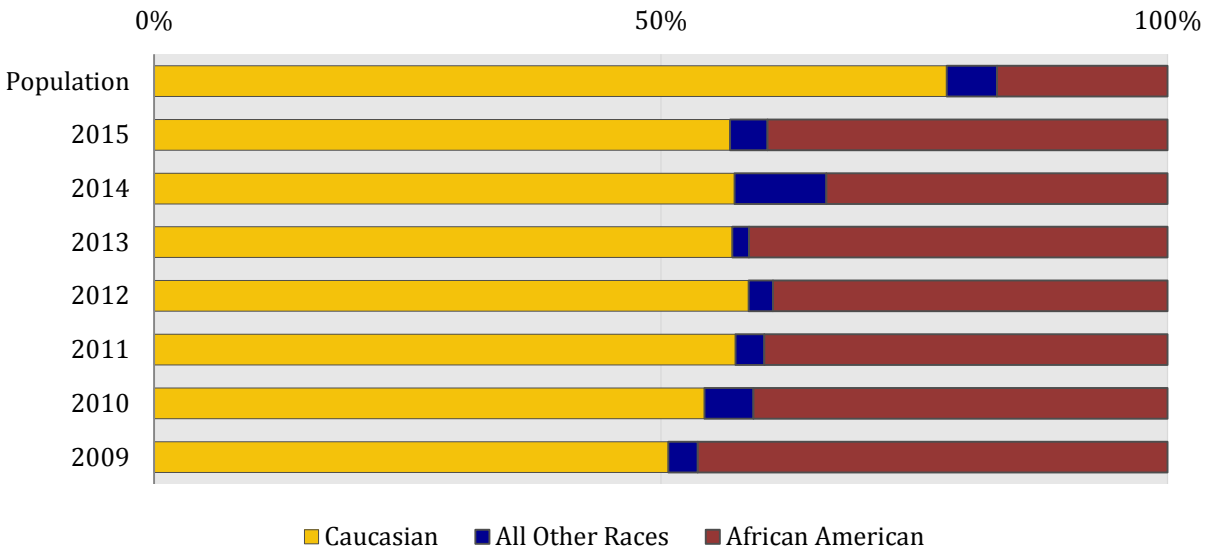


S.C. crashed pedestrian ethnicities

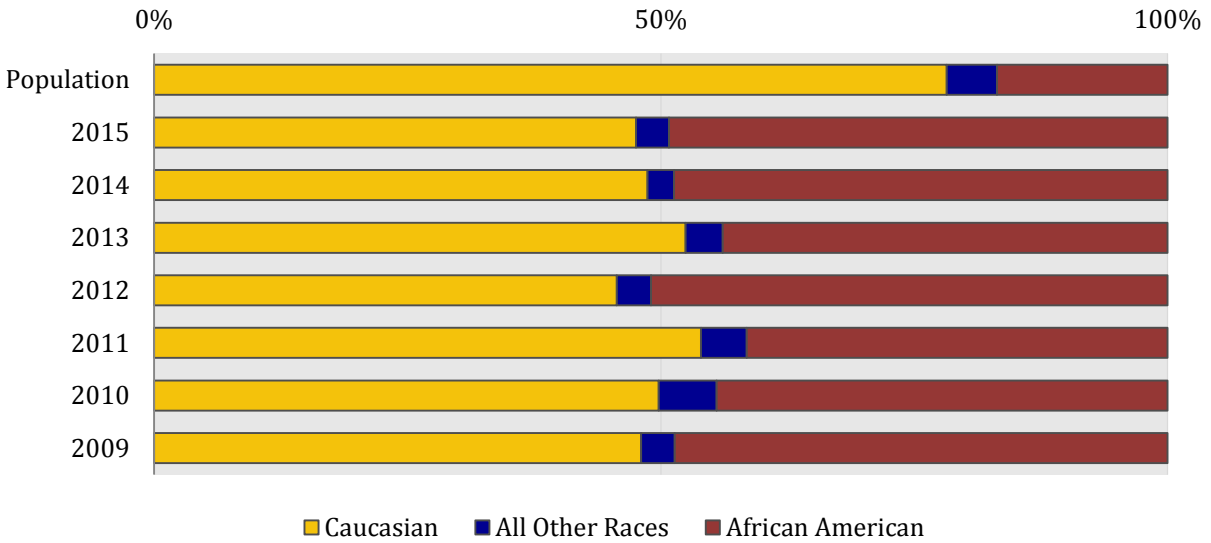


**Figures 11. & 12.. Race of crash victims with injury,
Appalachian Council of Government 2009 – 2015**
Population = 1,174,674 (avg.) 78.6% Caucasian, 4.7% All other, 16.7% African

Appalachian COG crashed bicyclist ethnicities

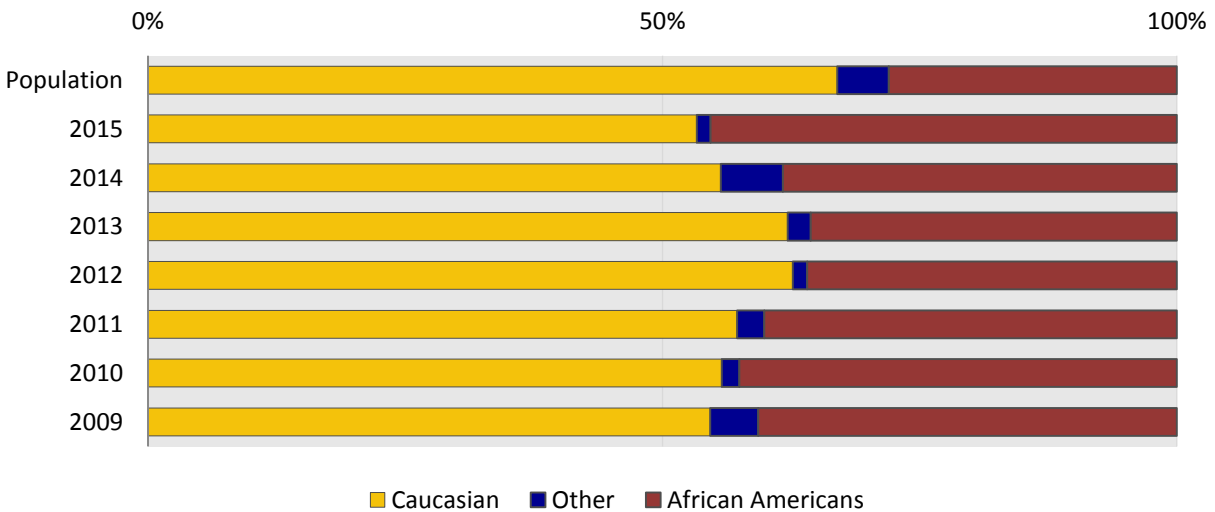


Appalachian COG crashed pedestrian ethnicities

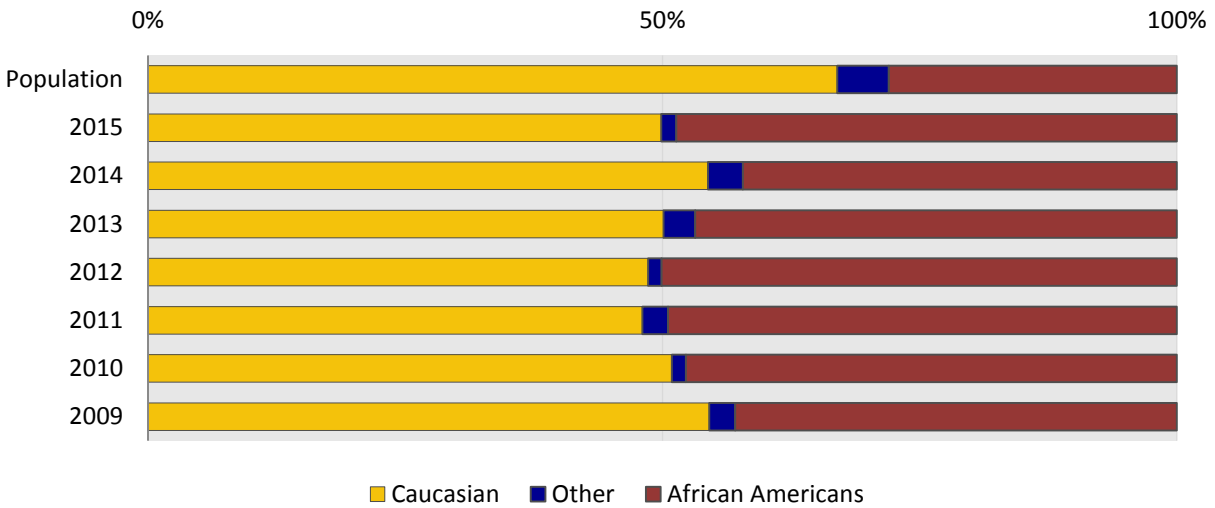


Figures 13. & 14. Race of crash victims with injury, Berkeley – Charleston - Dorchester Council of Government 2009 – 2015
 Population = 674,677 (avg.) 66.9% Caucasian, 5.4% All other, 27.7% African

BCD COG crashed bicyclist ethnicities

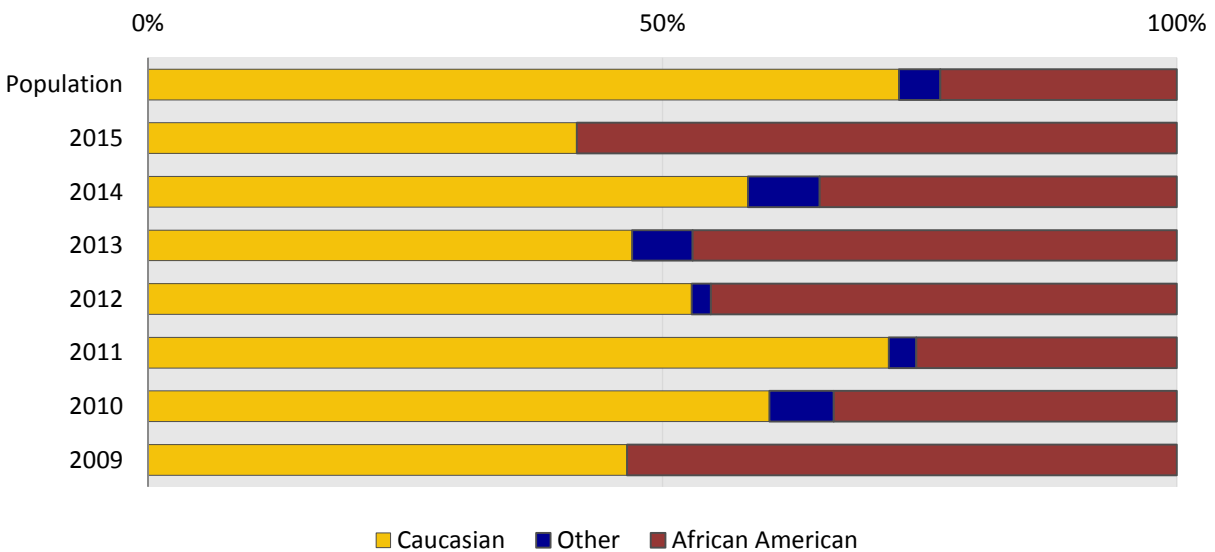


BCD COG crashed pedestrian ethnicities

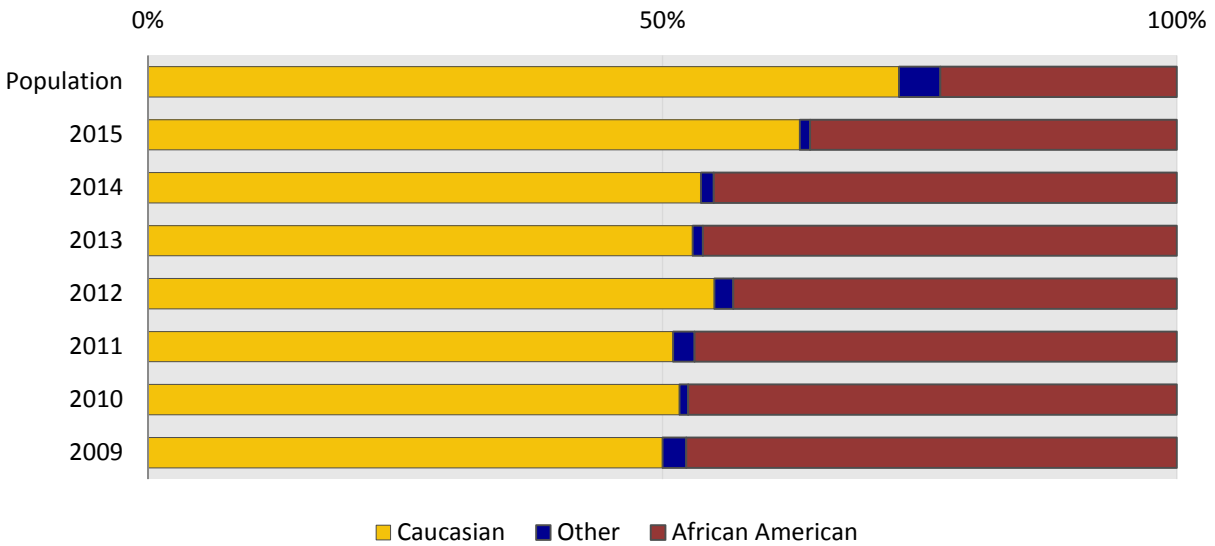


Figures 15. & 16. Race of crash victims with injury,
Catawba Council of Government 2009 – 2015
Population = 365,607 (avg.) 73.3% Caucasian, 4.1% All other, 22.6% African

Catawba COG crashed bicyclist ethnicities

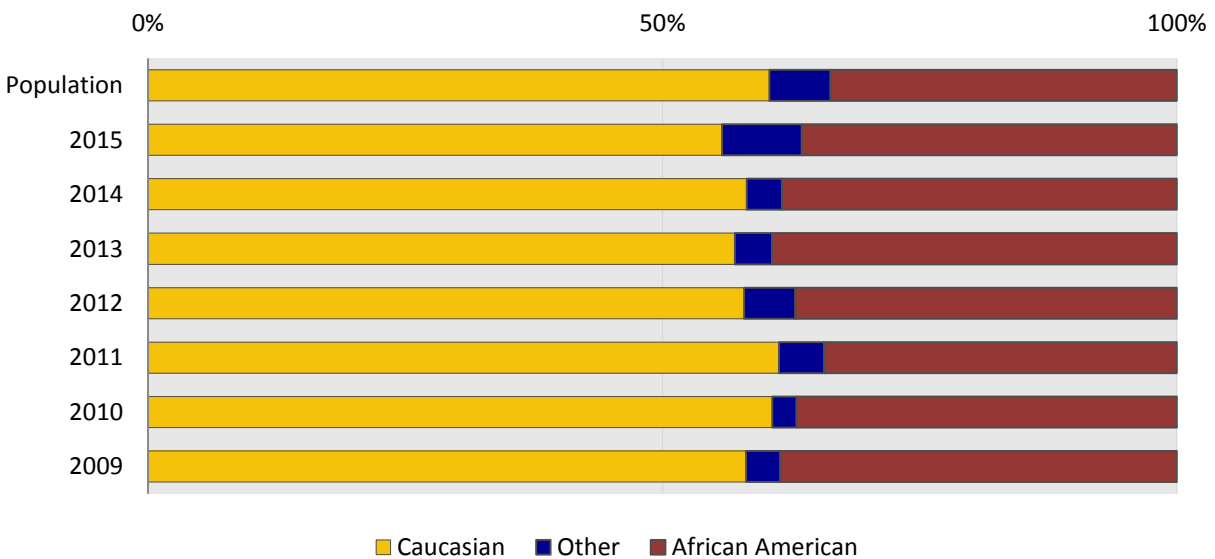


Catawba COG crashed pedestrian ethnicities

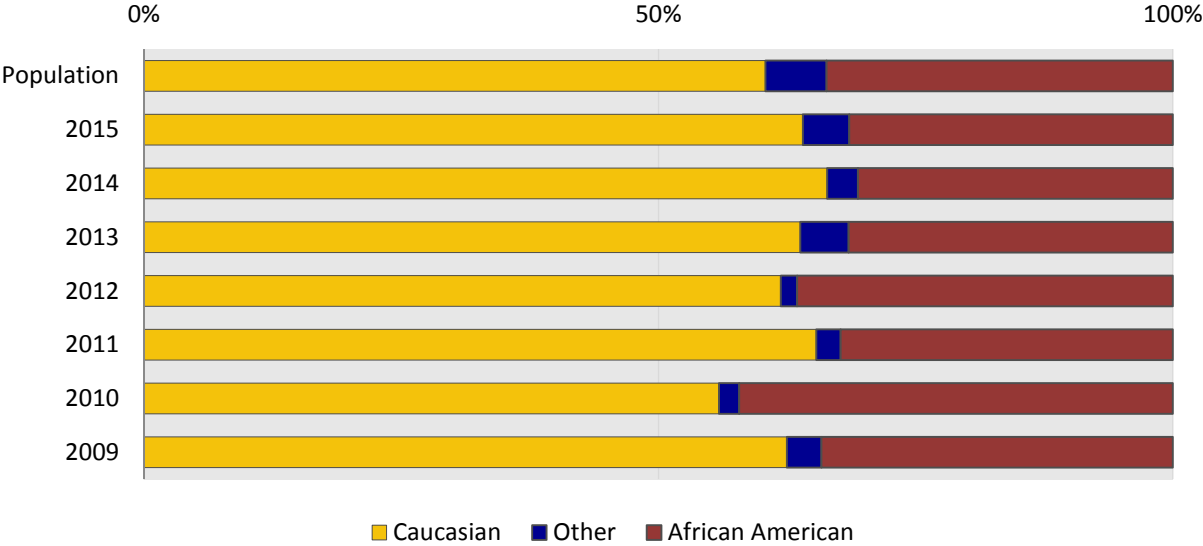


Figures 17. & 18. Race of crash victims with injury,
 Central Midlands Council of Government 2009 – 2015
 Population = 707,093 (avg.) 60.6% Caucasian, 5.6% All other, 33.8% African

Central Midlands COG crashed bicyclist ethnicities

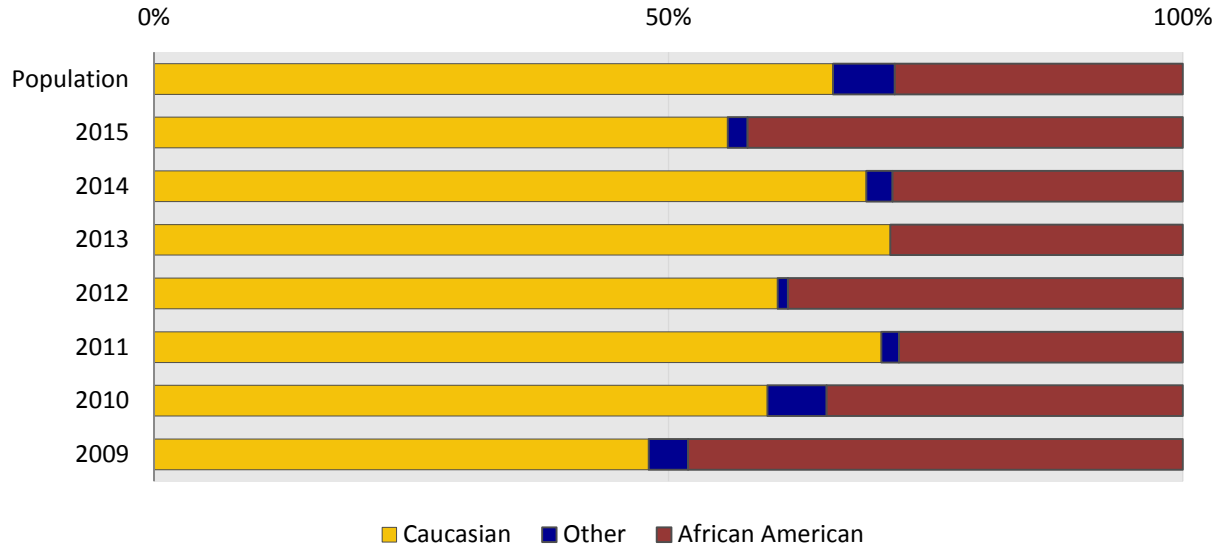


Central Midlands COG crashed pedestrian ethnicities

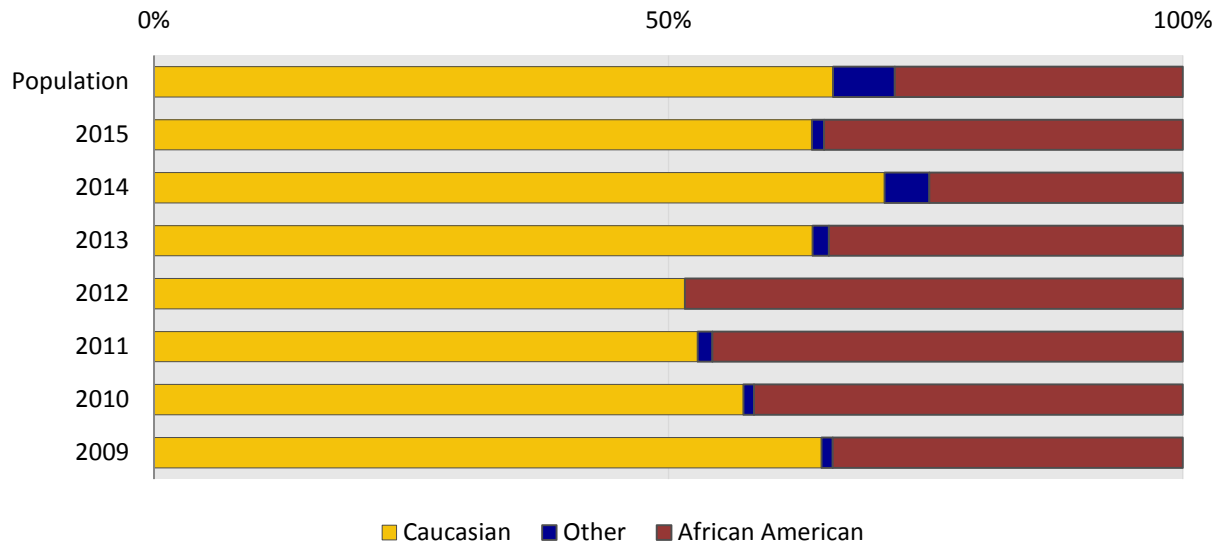


**Figures 19. & 20. Race of crash victims with injury,
 Lowcountry Council of Government 2009 – 2015**
 Population = 246,854 (avg.) 66.0% Caucasian, 5.9% All other, 28.1% African

Lowcountry COG crashed bicyclist ethnicities

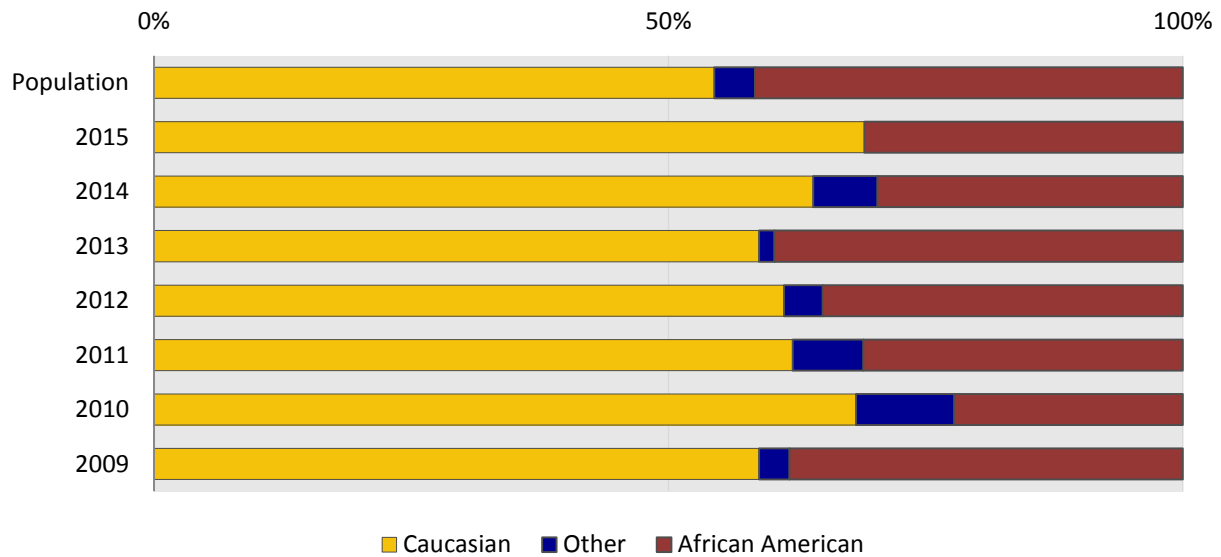


Lowcountry COG crashed pedestrian ethnicities

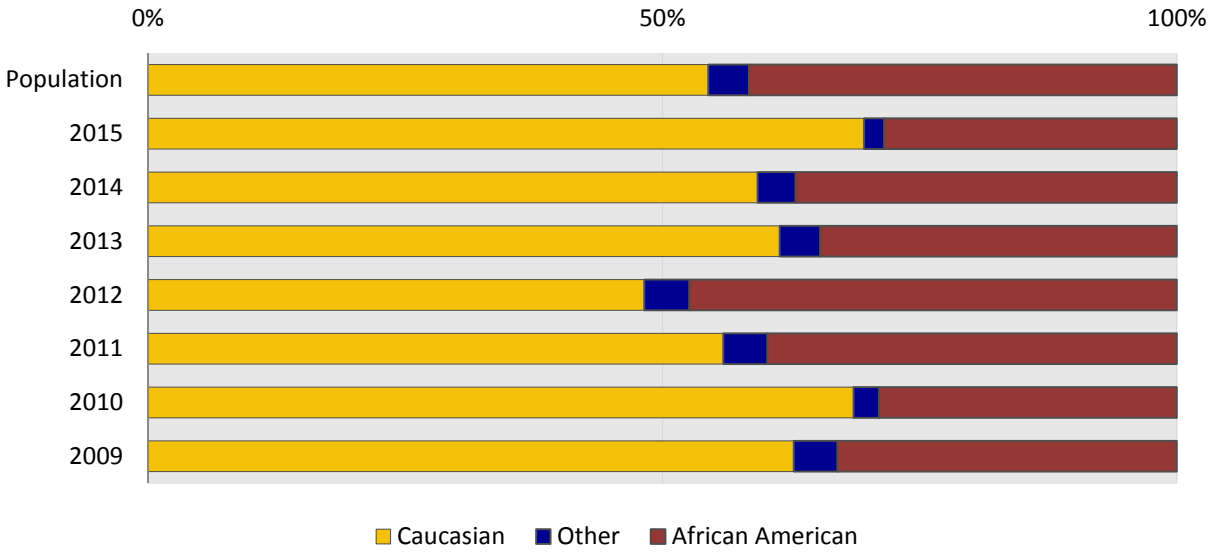


**Figures 21. & 22. Race of crash victims with injury,
Lower Savannah Council of Government 2009 – 2015**
Population = 314,607 (avg.) 54.8% Caucasian, 3.7% All other, 41.5% African

Lower Savannah COG crashed bicyclist ethnicities

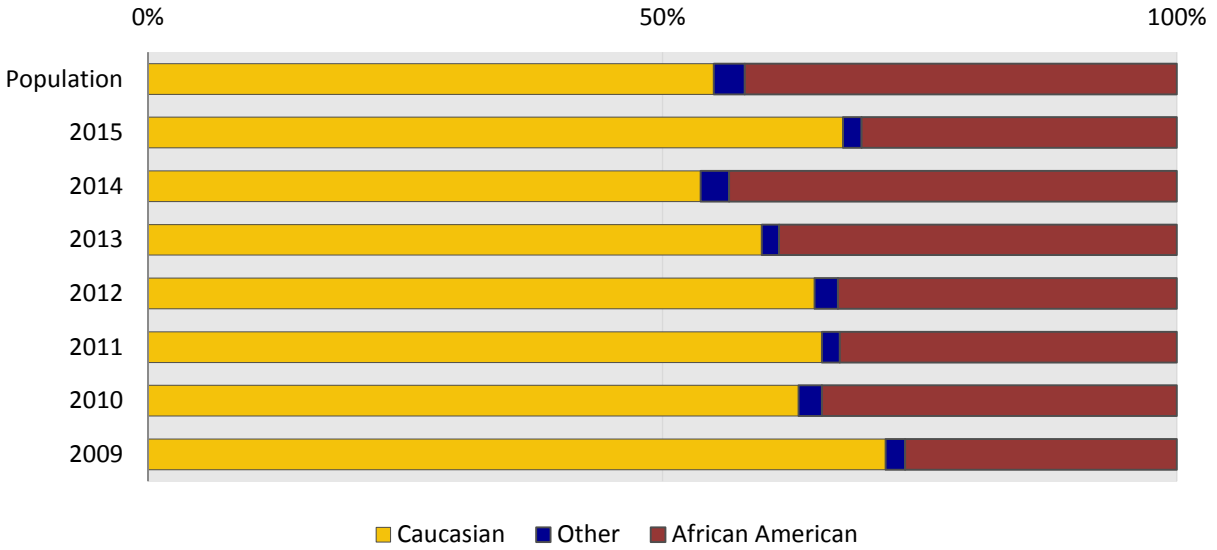


Lower Savannah COG crashed pedestrian ethnicities

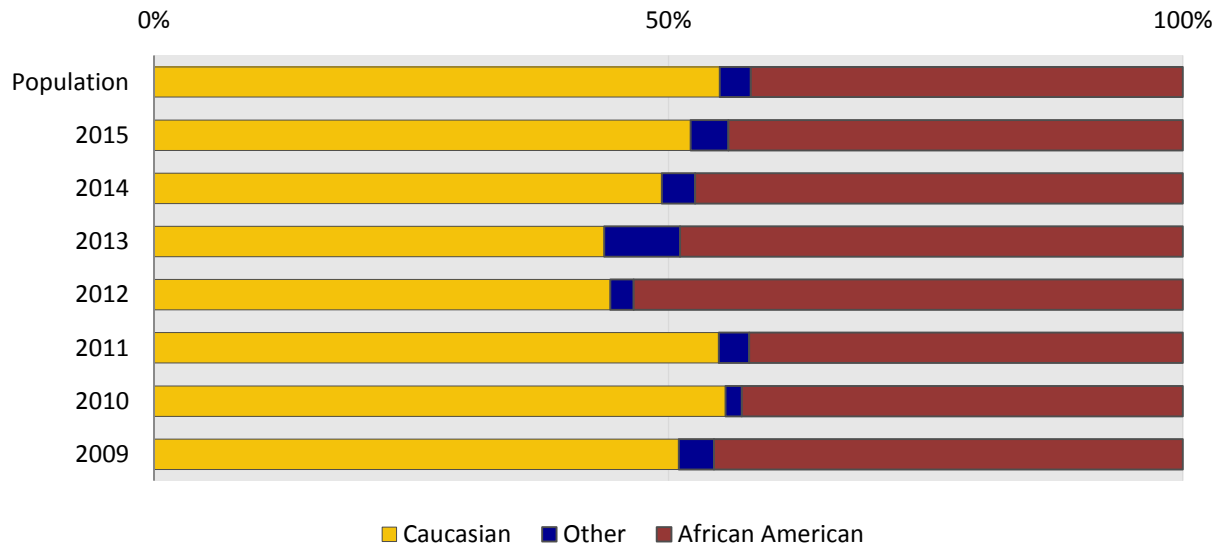


**Figures 23. & 24. Race of crash victims with injury,
 Pee Dee Council of Government 2009 – 2015**
 Population = 324,681 (avg.) 54.8% Caucasian, 3.0% All other, 42.3% African

Pee Dee COG crashed bicyclist ethnicities

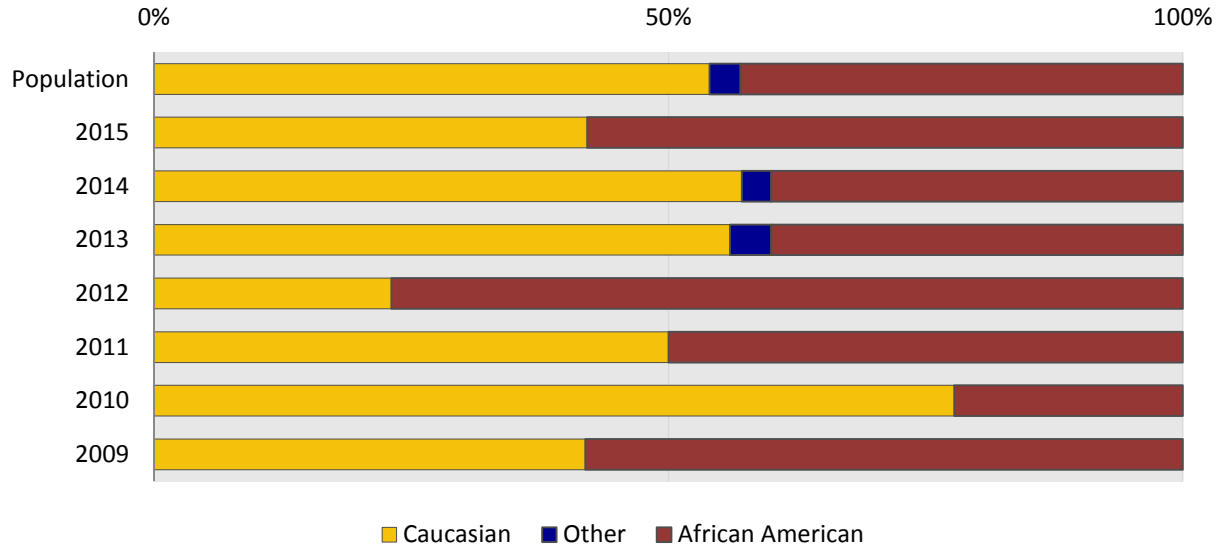


Pee Dee COG crashed pedestrian ethnicities

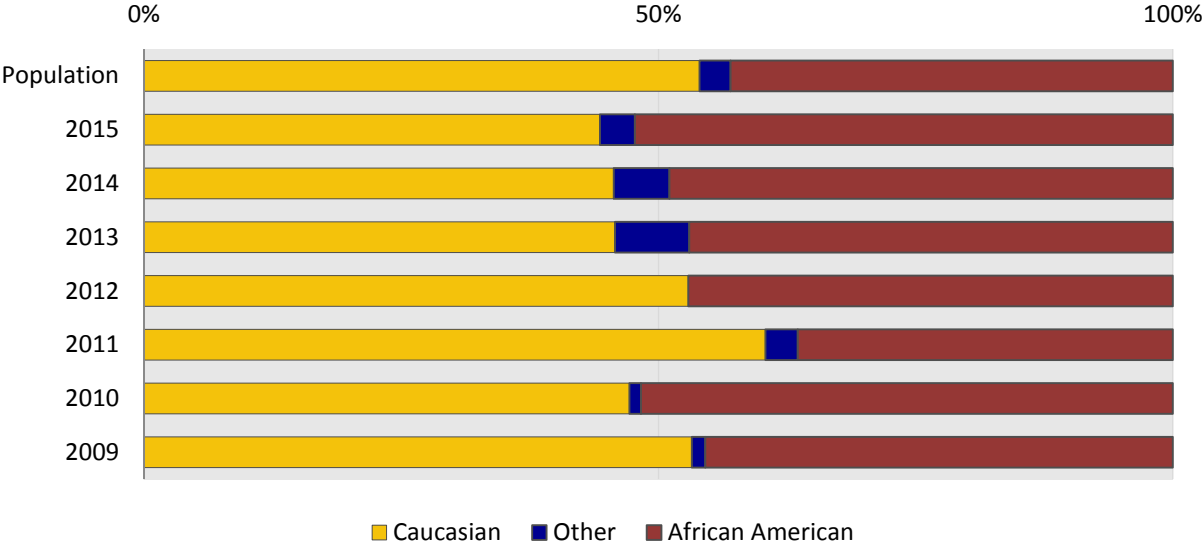


**Figures 25. & 26. Race of crash victims with injury,
Santee Lynches Council of Government 2009 – 2015**
Population = 221,503 (avg.) 54.0% Caucasian, 3.0% All other, 43.0% African

Santee Lynches COG crashed bicyclist ethnicities

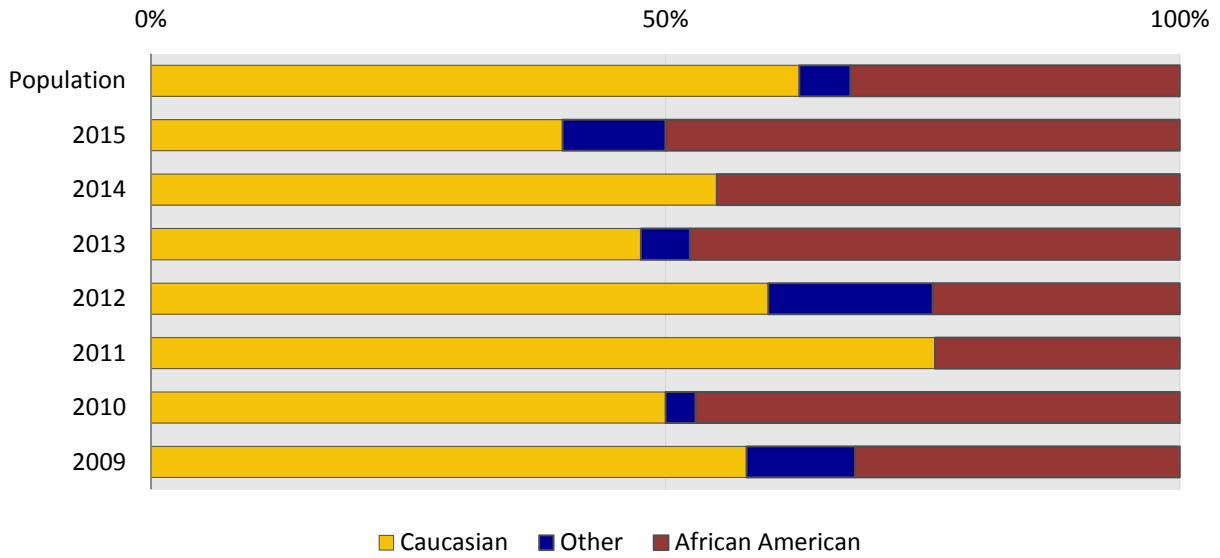


Santee Lynches COG crashed pedestrian ethnicities

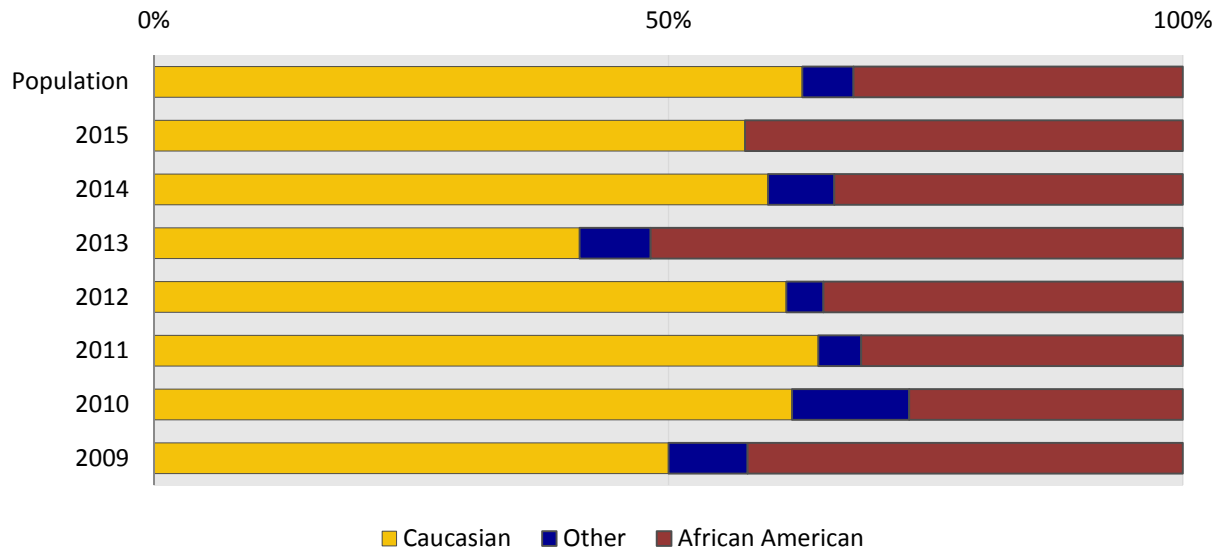


Figures 27. & 28. Race of crash victims with injury,
 Upper Savannah Council of Government 2009 – 2015
 Population = 236,499 (avg.) 63.5% Caucasian, 4.6% All other, 31.9% African

Upper Savannah COG crashed bicyclist ethnicities

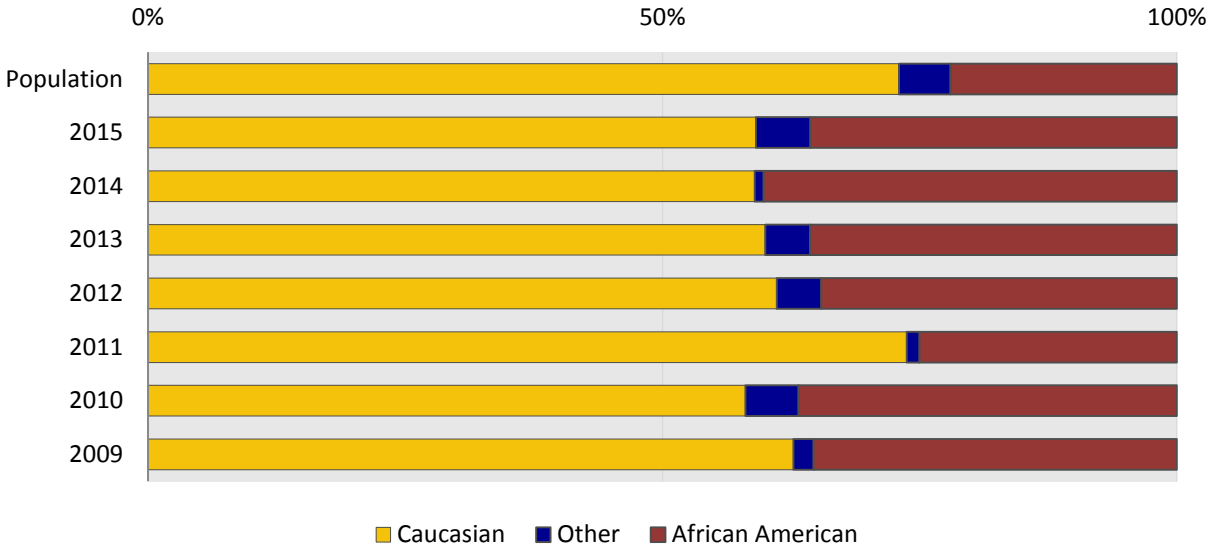


Upper Savannah COG crashed pedestrian ethnicities

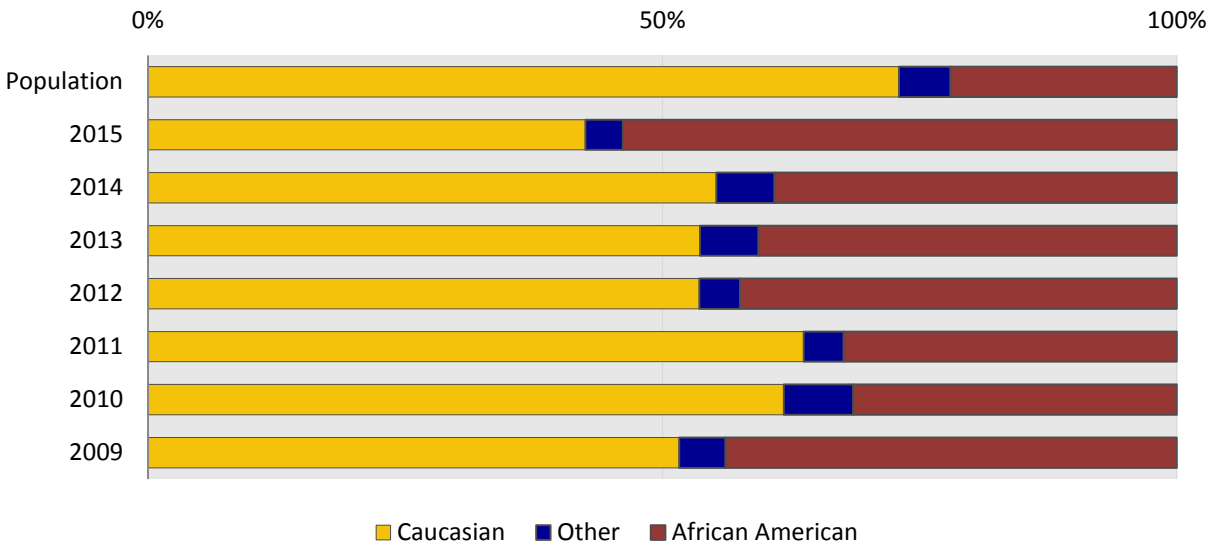


**Figures 29. & 30. Race of crash victims with injury,
Waccamaw Council of Government 2009 – 2015**
Population = 367,736 (avg.) 73.1% Caucasian, 5.0% All other, 21.9% African

Waccamaw COG crashed bicyclist ethnicities



Waccamaw COG crashed pedestrian ethnicities



SCDOT Regional Planning Bodies: Councils of Government (in red)

